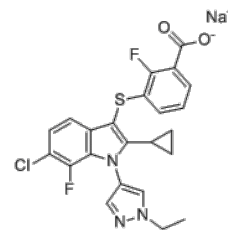


Product Name : PAT-505
Cat. No. : PC-60638
CAS No. : 1782070-22-7
Molecular Formula : C₂₃H₁₇ClF₂N₃NaO₂S
Molecular Weight : 495.905
Target : Autotaxin
Solubility : 10 mM in DMSO



Biological Activity

PAT-505 (PAT 505, PAT505) is a potent, selective, noncompetitive, and orally active **autotaxin** inhibitor with IC₅₀ of 2.0 nM against the lysoPLD activity of human ATX.

PAT-505 displays high selectivity over other ENPP proteins and no significant agonist or antagonist activity at PPAR α and PPAR γ .

PAT-505 maintains good potency for inhibition of lysoPLD activity with IC₅₀ of 9.7 nM and 62 nM in human blood and mouse plasma, respectively.

PAT-505 robustly reduces liver fibrosis with no significant effect on steatosis, hepatocellular ballooning, or inflammation in high-fat diet model of NASH.

References

Bain G, et al. *J Pharmacol Exp Ther*. 2017 Jan;360(1):1-13.

Caution: Product has not been fully validated for medical applications. Lab Use Only!

E-mail: tech@probechem.com